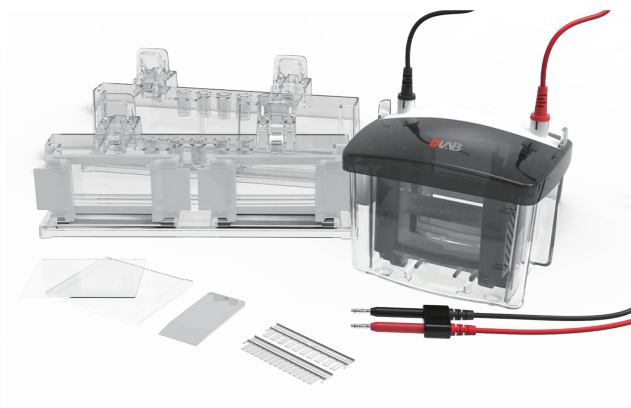


DL-MINI04

Vertical electrophoresis tank



Features

- The edge gasket is permanently fixed on the long glass plate to ensure the precise alignment of the glass plate and prevent glue leakage;
- The cam-lock gel frame is easy to operate and can precisely align the glass plate on any plane;
- Special plastic electrophoresis combs do not inhibit gel polymerization Built-in ridges avoid air contact;
- Ensure uniform gel polymerization;
- The long glass plate with edge gasket is thickened so that the glass plate is not easy to break;
- The one-piece gel filling rack is arranged in parallel, and two gels can be observed at the same time;
- SDS-PAGE electrophoresis time: 45 minutes (200V constant voltage);
- High-purity platinum electrode wire to achieve the best electrical conductivity;
- The parameters and accessories of this product are fully compatible with imported similar products;
- This product is compatible with DL-ZY03 for blot transfer;

Technical Parameters

Number of gels: 1-4 pieces

Gel thickness: 0.75, 1, 1.5mm

Option tooth number of sample comb: 10, 15 teeth

Glass size: short glass plate (10.1×7.3cm); long glass plate (10.1×8.2cm)

Gel size: hand-cast gel (8.3×7.3cm); precast gel (8.6×6.8cm)

Standard configuration

Name	Unit	Quantity
Lid with cables	Set	1
Bottom tank	pc	1
Electrode main core	Set	1
Electrode sub-core	Set	1
Gel glass thick plate	pc	5
Gel Glass thin plate	pc	5
10-well comb	pc	5
Gel casing stand	pc	2
Casing frame	pc	4
Single Gel Baffle	pc	1
Gel Releaser	pc	1

Prepare 1.0mm thick gel by default