

# SP-XUV5102

## Touch screen xenon lamp double beam UV Vis spectrophotometer



## Features

- 10.1 inches high resolution TFT colored capacitive touch screen (1024\*600) and windows graphic interface.
- Powerful functions like Photometric measurement, Quantitative measurement, Kinetics, Spectrum scan, DNA\Protein test, multi-wavelength test, etc
- In-house massive memory is capable of saving up to 1024M for test data & working curves.
- Various optional accessories, like automatic cell holder, thermostatic automatic sampler, adjustable micro cell holder, reflection accessory and integrating sphere, etc. which extend the application range of device and combine the requirements of common samples and special ones.
- Supports USB storage. The USB port can be used for data transfer, which is easily exported to Excel for further processing, analysis and storage.
- Socket type deuterium and tungsten lamp can make lamps switching without optics debugging and easy to be replaced.
- Xenon lamp light source with extra-long service life saves you the trouble of changing lamps;
- Follow GLP/GMP standards, user management, logging, data tracking and exporting, etc. are all available.

Specifications	SP-XUV5102
Optical System	Double Beam
Wavelength Range	190-1100 nm
Spectral Bandwidth	2.0nm
Wavelength Accuracy	±0.1nm (at 656.1nm), ±0.3nm full range
Wavelength Repeatability	≤0.1nm
Photometric Accuracy	±0.002A(0~0.5A)±0.003A(0.5A~1A)
Photometric Repeatability	±0.001A(0~0.5A)±0.0015A(0.5A~1A)
Photometric Range	-0.3~3A,0~9999C(0~9999F)
Stray Light	≤0.03%T @ 220,360nm
Stability	≤0.001A/h / 500 nm
Baseline Flatness	±0.001A
Noise	0.0005A@500nm
Work Mode	T, A, C, E
Scanning Speed	High   Medium   Slow
Wavelength Setting	Auto
Display	10.1-inch large color touch screen(1024×600)
Light Source	Hamamatsu Xenon Lamp (Japan)
Detector	Imported Silicon Photodiode
Cuvette Holder	Single hole 1cm holder(standard for double beam)
Output	USB Port Printer Port
Power Requirements	110/220V,50/60Hz,120W
Dimension[L×W×H]	570mm×440×210mm
Weight	20kg
Standard Accessories	10mm glass cuvette x 4, 10mm quartz cuvette x 2, Power cord, User's Manual, PC software



item No. 18901008

1mm(H)\*10mm(W)\*30mm(L)  
(for SP-UV3101/SP-UV3102/  
SP-UV5101/SP-UV5102)



item No. 18901007

Thin film sample holder  
1mm (H) \*10mm (W) \*30mm (L)  
(for SP-UV2101/SP-UV2102)



item No. 18901009

Single hole 1cm holder  
(for SP-UV3101/SP-UV3102/  
SP-UV5101/SP-UV5102)



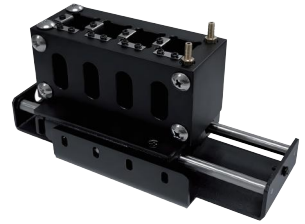
item No. 18901010

Single hole 5cm holder(1cm-10cm)  
(for SP-UV3101/SP-UV3102/  
SP-UV5101/SP-UV5102)



item No. 18204256

4 position 5cm holder(1cm-5cm)  
(for SP-UV2101/SP-UV2102)



item No. 18900336

10MM water bath 4-position manual  
cuvette holder 1cm  
(for SP-UV2101/SP-UV2102)



item No. 18901012

Integrating Sphere  
95mm(L)\* 101mm(W)\* 99mm(H)  
(for SP-UV3101/SP-UV3102/  
SP-UV2101/SP-UV2102)



item No. 18901013

Automatic 8-position cell holder  
1cm  
(for SP-UV2101/SP-UV2102)



item No. 18901014

Automatic 5-position cell holder  
1cm-5cm  
(for SP-UV2101/SP-UV2102)



item No. 18902175

Automatic 4-position cell holder  
1cm-5cm  
(for SP-UV2101/SP-UV2102)



item No. 18902200

Automatic 8-position cell holder  
1cm  
(for SP-UV3101/SP-UV3102/  
SP-UV5101/SP-UV5102)



item No. 18901011

Deuterium lamp (A510KU) 10V  
(for SP-UV3101/SP-UV3102/  
SP-UV2101/SP-UV2102)



item No. 18901382

Tungsten lamp HYBEC  
(for SP-UV3101/SP-UV3102/  
SP-UV2101/SP-UV2102)



item No. 18901509

Visible light precision filter  
440, 546, 635nm  
(for full series)



item No. 18901510

UV-K2Cr2O7  
235, 257, 313, 350nm  
(for full series)



item No. 18901511

HOMIUM  
241, 361, 417, 538, 641nm  
(for full series)



item No. 18901512

Stray light filter  
220nm  
(for full series)



item No. 18901513

Stray light filter  
360nm  
(for full series)